

AC100E STYRENE-FREE ADHESIVE ANCHOR

DESCRIPTION

- ETA approved for uncracked concrete, solid and hollow masonry
- Quick curing
- Styrene free low odour formulation
- Ideal for threaded rods
- Includes 2 x mixing nozzles per cartridge
- Suitable for indoor / dry environments
- Polyester adhesive

APPROVED BASE MATERIALS

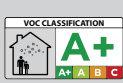


APPROVALS

EUROPEAN TECHNICAL ASSESSMENT



EUROPEAN TECHNICAL ASSESSMENT

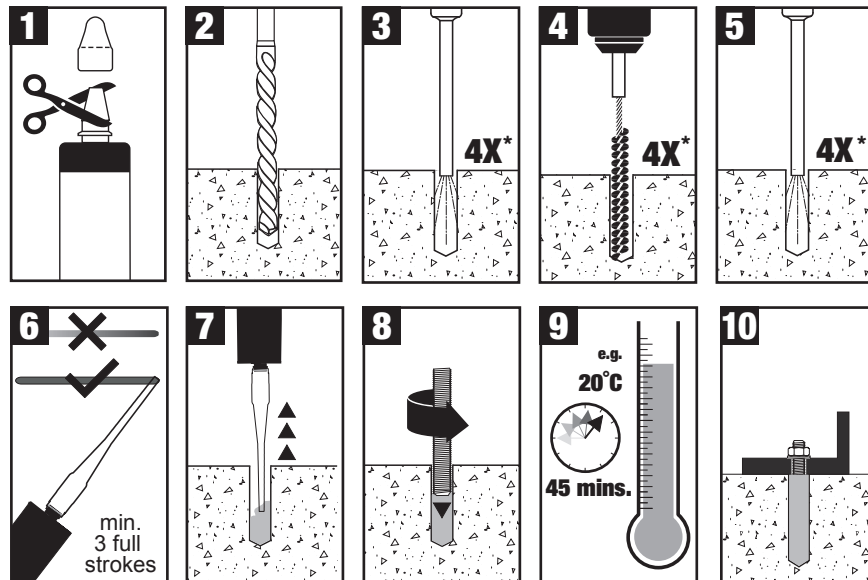


PRODUCT OVERVIEW



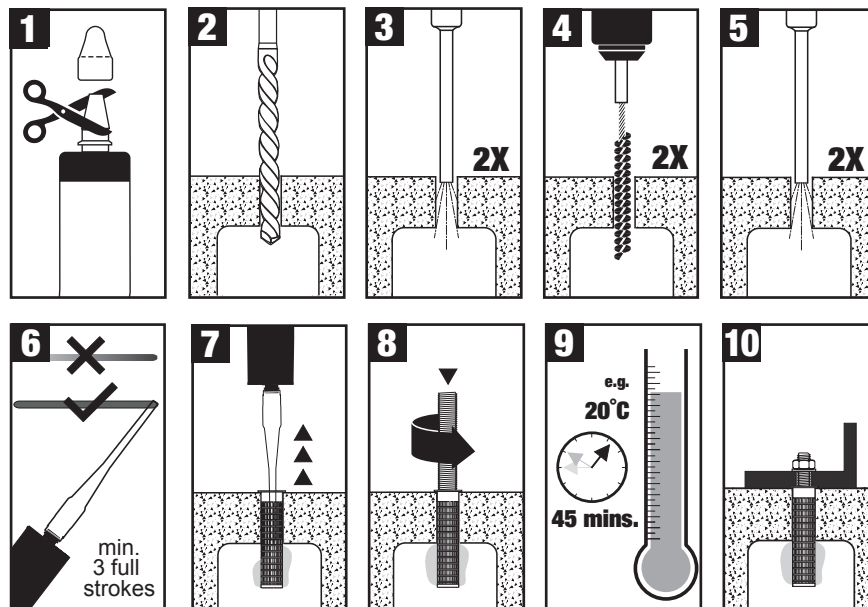
Cat No.		Cartridge Size [ml]	Box Qty	Carton Qty
AC100E-PWR	•	300	6	12

INSTALLATION INSTRUCTIONS - CONCRETE AND SOLID BRICK / MASONRY



* 2X for solid masonry.

INSTALLATION INSTRUCTIONS - HOLLOW MASONRY, WITH SLEEVE



Australia

VIC (Head Office)
Level 2, 810 Whitehorse Road,
Box Hill, Victoria, 3128
Tel: 1800 338 002
Fax: 1800 080 898
Email: sales@powers.com.au
VIC (Warehouse)
29 Indian Drive,
Keysborough, Victoria, 3175

New Zealand

39 Business Parade North, Highbrook,
East Tamaki Heights, Auckland, 2013.
PO Box 12-135, Penrose, Auckland,
1642
Tel: 0800 339 258
Fax: 0800 2782 6539
Email: nzsales@sbdinc.com

FOR TECHNICAL ENQUIRIES
Email: techassist@sbdinc.com

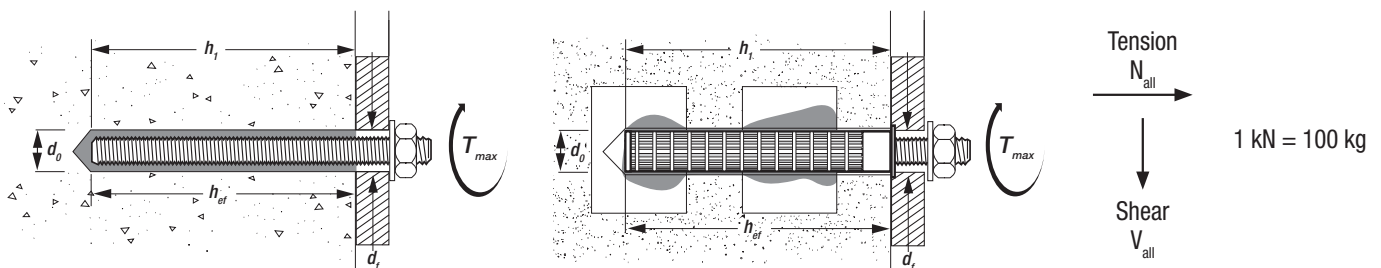
AC100E STYRENE-FREE ADHESIVE ANCHOR

SETTING TIMES


Temperature °C	Gel Time	Curing Time
- 5 to -1	90 min	360 min
0 to 4	45 min	180 min
5 to 9	25 min	120 min
10 to 14	20 min	100 min
15 to 19	15 min	80 min
20 to 29	6 min	45 min
30 to 34	4 min	25 min
35 to 39	2 min	20 min

INSTALLATION PARAMETERS

Parameter	Notation	Unit	M8	M10	M12	M16	M20	M24
Nominal drill hole diameter	d_o	(mm)	10	12	14	18	24	28
Depth of drill hole	h_1	(mm)	80	90	110	125	170	210
Minimum edge distance	c_{min}	(mm)	40	50	60	80	100	120
Minimum spacing	s_{min}	(mm)	40	50	60	80	100	120
Minimum thickness of member	h_{min}	(mm)	110	120	140	160	215	260
Maximum torque moment	T_{max}	(Nm)	10	20	40	60	120	150
Embedment depth	h_{ef}	(mm)	80	90	110	125	170	210




ALLOWABLE LOADS - UNCRACKED CONCRETE - AC100E



C20/25

$$\frac{N_{Rk}}{\gamma_M \cdot \gamma_F} = N_{all}$$

$\gamma_f = 1.4$



5.8

40°C short term, 24°C long term

Size	Single anchor located far from edge i.e edge distance equals $c_{cr,N}$ (and more)			Single anchor located close to edge i.e edge distance equals c_{min} (and more)		
	Edge Distance [mm]	Tension N_{all} [kN]	Shear V_{all} [kN]	Edge Distance [mm]	Tension N_{all} [kN]	Shear V_{all} [kN]
M8	≥ 80	6.4	5.1	≥ 40	4.0	2.6
M10	≥ 90	13.8	8.6	≥ 50	7.9	3.8
M12	≥ 110	13.9	12.0	≥ 60	8.6	5.2
M16	≥ 125	19.9	22.3	≥ 80	12.4	8.2
M20	≥ 170	29.8	34.9	≥ 100	19.3	12.3
M24	≥ 210	37.7	50.3	≥ 120	25.5	16.9

Note: Pre-calculated loads are based on design data as given in ETA-13/0061, using characteristic loads N_{Rk} and safety factors γ_M given for all failure modes. The safety factor for the acting load demand is assumed as $\gamma_F = 1.4$.

ALLOWABLE LOADS - MASONRY - AC100E

Note: The allowable loads for masonry depends on the specific masonry type used. ETA-13/0063 includes several representative masonry types for which the allowable load ranges between 0.1 and 1.5 kN, depending on the masonry type but also the anchor diameter, load direction and other parameters. It is recommended to carry out onsite tests and evaluations by qualified personnel. Contact DeWALT for further assistance.