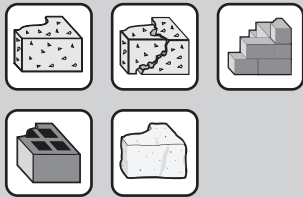


## AC100-PRO VINYLESTER ANCHOR

### DESCRIPTION

- ETAG 001 approved (ETA Option 1) for use in cracked and uncracked concrete
- ETAG 029 approved for use in solid and hollow brick
- Approved for post-installed rebar applications
- Seismic loading approval according to category C1
- Approved for water filled drill holes
- Approved for overhead applications
- Installation down to -10°C
- Includes 2 x mixing nozzles per cartridge

### MATERIALS



### APPROVALS

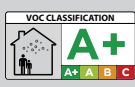
#### EUROPEAN TECHNICAL ASSESSMENT



#### EUROPEAN TECHNICAL ASSESSMENT



#### EUROPEAN TECHNICAL ASSESSMENT

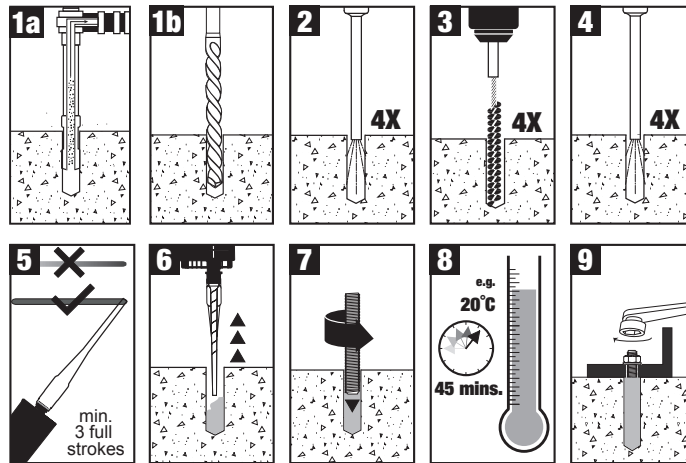


### PRODUCT OVERVIEW

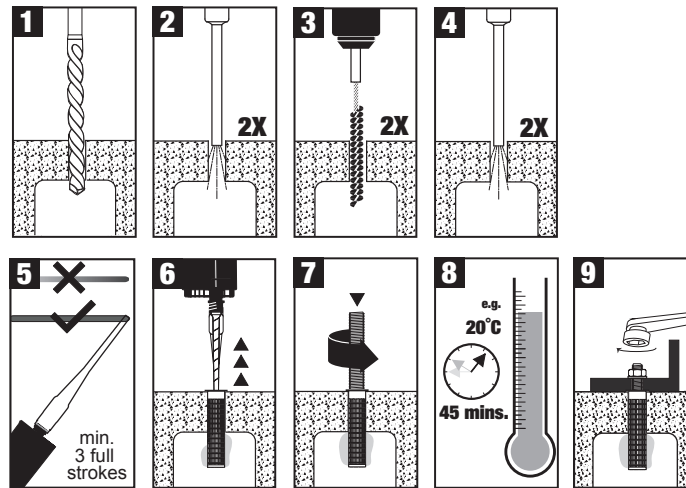


Cat No.	ETA	Cartridge Size [ml]	Box Qty	Carton Qty
AC100-PWR	•	410ML	6	12

### INSTALLATION INSTRUCTIONS - CONCRETE AND SOLID BRICK / MASONRY



### INSTALLATION INSTRUCTIONS - HOLLOW MASONRY, WITH SLEEVE



### INSTALLATION PARAMETERS - THREADED ROD

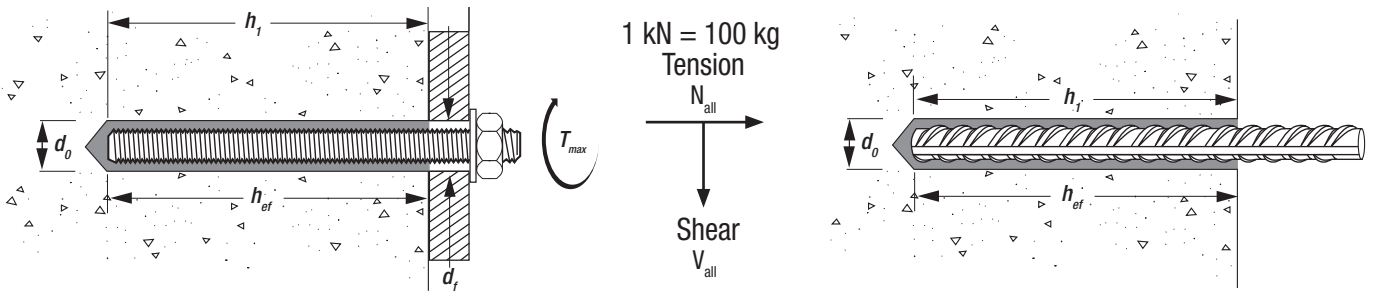
Parameter	Notation	Unit	AC100-PRO - Threaded rod							
			M8	M10	M12	M16	M20	M24	M27	M30
Anchor diameter	d	[mm]	8	10	12	16	20	24	27	30
Nominal drill bit diameter	d <sub>0</sub>	[mm]	10	12	14	18	24	28	32	35
Diameter of clearance hole in fixture	d <sub>f</sub>	[mm]	9	12	14	18	22	26	30	33
Minimum embedment and drill hole depth	h <sub>ef,min</sub> = h <sub>f</sub>	[mm]	60	60	70	80	90	96	108	120
Maximum embedment and drill hole depth	h <sub>ef,max</sub> = h <sub>f</sub>	[mm]	160	200	240	320	400	480	540	600
Minimum member thickness	h <sub>min</sub>	[mm]	h <sub>ef</sub> + 30 mm ≥ 100 mm			h <sub>ef</sub> + 2 · d <sub>0</sub>				
Minimum spacing	s <sub>min</sub>	[mm]	40	50	60	80	100	120	135	150
Minimum edge distance	c <sub>min</sub>	[mm]	40	50	60	80	100	120	135	150
Thickness of fixture	t <sub>fix</sub>	[mm]	0 mm ≤ t <sub>fix</sub> ≤ 1500 mm							
Maximum torque moment	T <sub>max</sub>	[Nm]	10	20	40	80	120	160	180	200
Torque wrench socket size	S <sub>w</sub>	[mm]	13	17	19	24	30	36	41	46

# AC100-PRO VINYLESTER ANCHOR

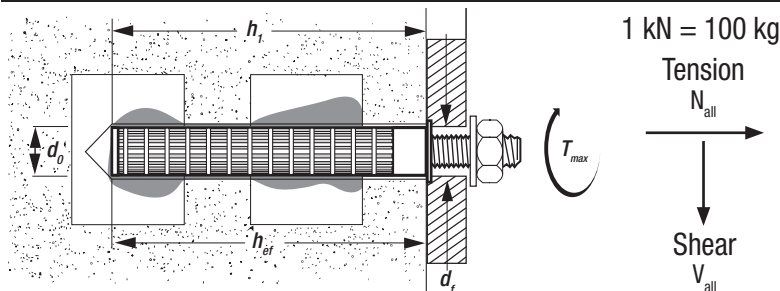
## SETTING TIMES

Temperature °C	Gel Time	Curing time in dry concrete	Curing time in wet concrete
-10 to -4	90 min	24 h	48 h
-5 to -1	90 min	14 h	28 h
0 to 4	45 min	7 h	14 h
5 to 9	25 min	2 h	4 h
10 to 19	15 min	80 min	160 min
20 to 29	6 min	45 min	90 min
30 to 34	4 min	25 min	50 min
35 to 39	2 min	20 min	40 min
40 and above	1,5 min	15 min	30 min

## INSTALLATION INFORMATION - THREADED ROD AND REBAR



## INSTALLATION INFORMATION - THREADED ROD WITH SLEEVE



## ALLOWABLE LOADS - UNCRACKED CONCRETE, THREADED ROD - AC100-PRO

C20/25

$$\frac{N_{Rk}}{\gamma_M \cdot \gamma_F} = N_{all}$$

$\gamma_F = 1.4$

8.8

40°C short term,  
24°C long term

Size	Embedment depth $h_{ef}$ [mm]	Single anchor located far from edge			Single anchor located close to edge		
		Edge distance	$N_{all}$ [kN]	$V_{all}$ [kN]	Edge distance	$N_{all}$ [kN]	$V_{all}$ [kN]
M8	80	$\geq 120$	10.5	8.6	$\geq 40$	6.1	2.6
M10	100	$\geq 150$	16.2	13.1	$\geq 50$	9.1	3.9
M12	120	$\geq 180$	23.4	19.4	$\geq 60$	12.1	5.4
M16	160	$\geq 240$	40.6	36.0	$\geq 80$	18.7	8.7
M20	200	$\geq 300$	56.7	56.0	$\geq 100$	26.1	12.8
M24	240	$\geq 360$	74.5	80.6	$\geq 120$	34.4	17.5
M27	270	$\geq 405$	88.9	105.1	$\geq 135$	40.9	21.4
M30	300	$\geq 450$	104.1	128.0	$\geq 150$	48.0	25.6

## ALLOWABLE LOADS - CRACKED CONCRETE, THREADED ROD - AC100-PRO

C20/25

$$\frac{N_{Rk}}{\gamma_M \cdot \gamma_F} = N_{all}$$

$\gamma_F = 1.4$

8.8

40°C short term,  
24°C long term

Size	Embedment depth $h_{ef}$ [mm]	Single anchor located far from edge			Single anchor located close to edge		
		Edge distance	$N_{all}$ [kN]	$V_{all}$ [kN]	Edge distance	$N_{all}$ [kN]	$V_{all}$ [kN]
M12	120	$\geq 180$	9.9	19.4	$\geq 60$	5.6	3.8
M16	160	$\geq 240$	17.6	36.0	$\geq 80$	9.9	6.2
M20	200	$\geq 300$	27.4	56.0	$\geq 100$	15.4	9.1
M24	240	$\geq 360$	39.5	80.6	$\geq 120$	22.6	12.4
M27	270	$\geq 405$	59.1	105.1	$\geq 135$	33.9	15.2
M30	300	$\geq 450$	72.9	128.0	$\geq 150$	39.6	18.2

## ALLOWABLE LOADS - MASONRY - AC100-PRO

Note: The allowable loads for masonry depends on the specific masonry type used. ETA-13/0050 includes several representative masonry types for which the allowable load ranges between 0.1 and 1.5 kN, depending on the masonry type but also the anchor diameter, load direction and other parameters. It is recommended to carry out onsite tests and evaluations by qualified personnel. Contact DeWALT for further assistance.